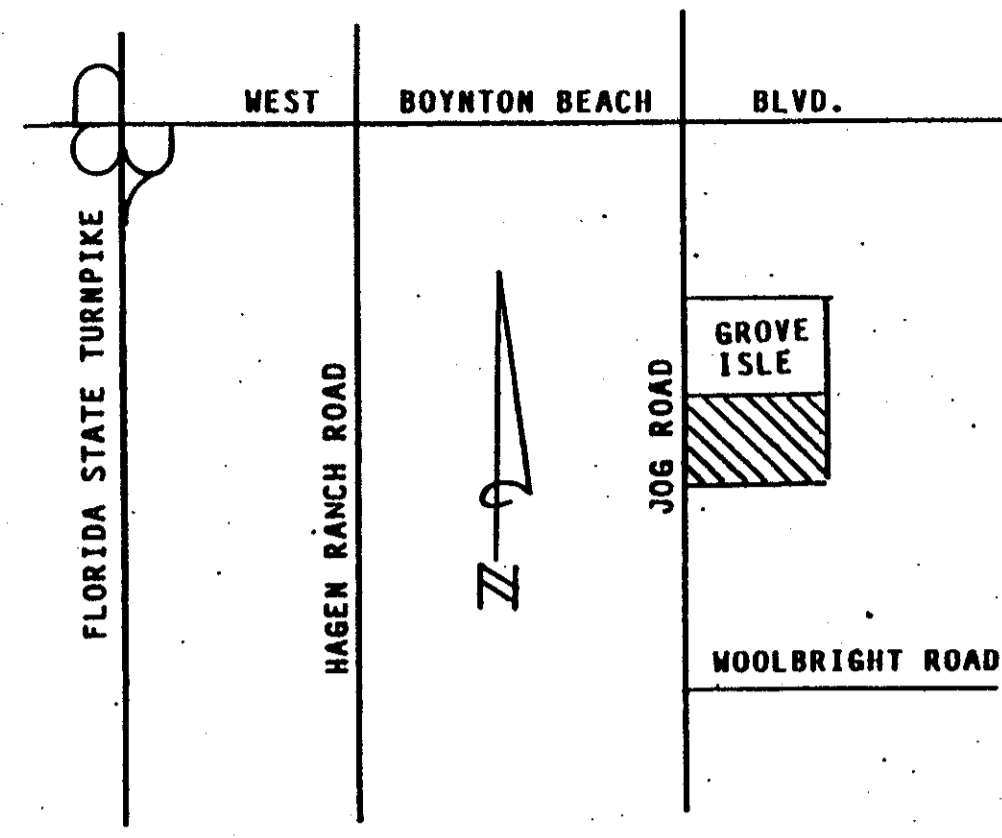


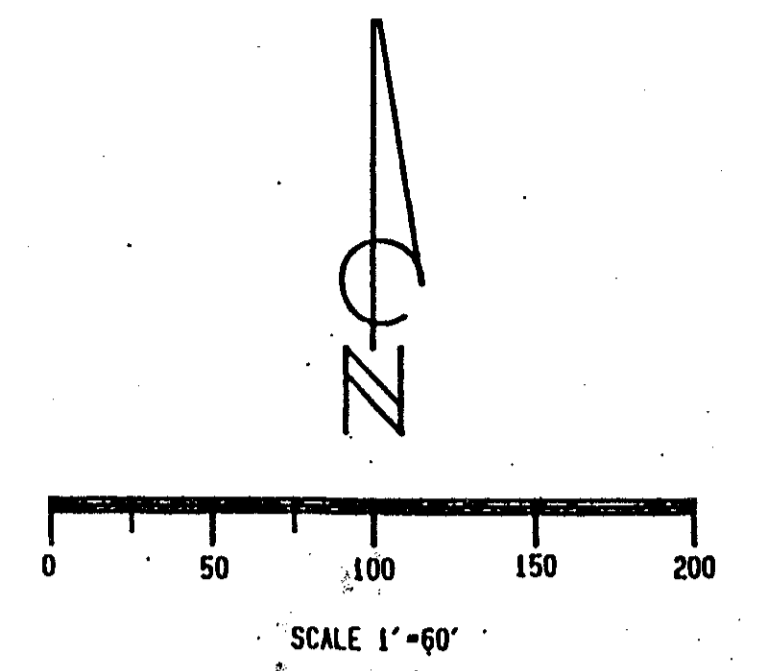
0663-001

28



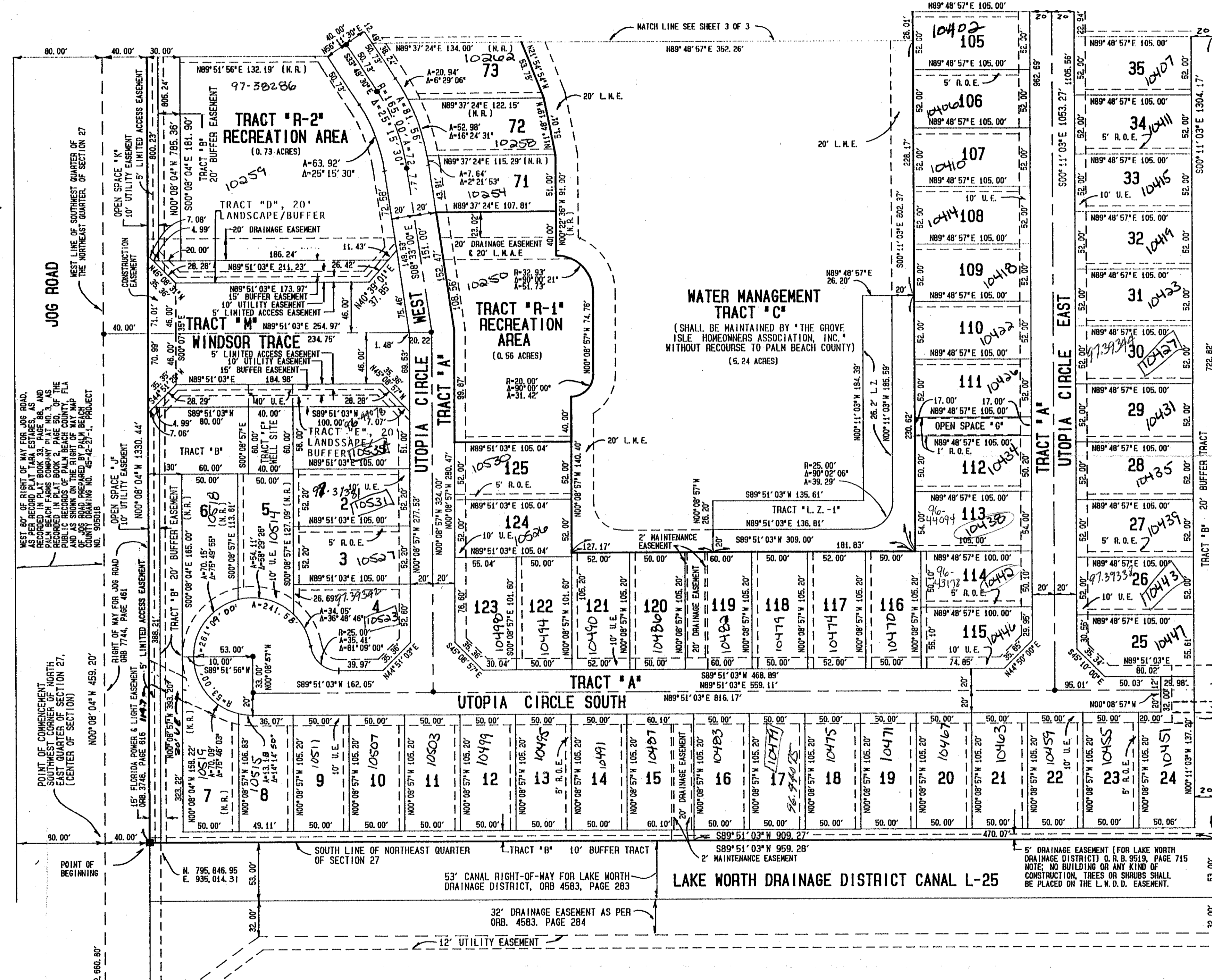
WINDSOR OAKS, P.U.D.  
**GROVE ISLE**  
 BEING A PORTION OF SECTION 27,  
 TOWNSHIP 45 SOUTH, RANGE 42 EAST,  
 PALM BEACH COUNTY, FLORIDA

DECEMBER, 1996  
 SHEET 2 OF 3



LOCATION MAP  
 NOT TO SCALE

TARA ESTATES, P. U. D.  
 PLAT BOOK 33, PAGE 88



ACREAGE (UNPLATTED)

*PET. 95-38  
 NO SCHOOLS  
 5/3/3/K*

LEGEND

- P.R.M. PERMANENT REFERENCE MONUMENT (L.B. 2102)
- P.C.P. PERMANENT CONTROL POINT (L.B. 2102)
- UTILITY EASEMENT (SIZE AS NOTED)
- LAKE MAINTENANCE EASEMENT
- DRAINAGE EASEMENT (SIZE AS NOTED)
- BUFFER EASEMENT (SIZE AS NOTED)
- LAKE MAINTENANCE EASEMENT
- OVERHANG & MAINTENANCE EASEMENT
- LITTORAL ZONE
- NON RADIAL LINE

NOTE: ALL LINES INTERSECTING CURVES ARE RADIAL UNLESS OTHERWISE NOTED.

SUBDIVISION: Grove Isle  
 BOOK: 79 PAGE: 28  
 FLOOD MAP: 1859  
 QUAD: 35  
 ZONING: RUD  
 ZIP CODE: 33457  
 PUD NAME: Grove Isles  
 SE 95-38

INDIAN WELLS, A P.U.D.  
 PLAT BOOK 52, PAGE 145

0663-001

79/28

LB 2102 Joe Tucker  
 LAND SURVEYORS  
**RICHARD L. SHEPARD and Associates**  
 Phone: 310 SOUTH FEDERAL HIGHWAY Boca (561) 391-4388  
 Boynton (561) 737-8546  
 BOYNTON BEACH, FLORIDA 33435 FAX: (561) 734-7548